

With GP-Pro EX

INDEX

- 01. Select overlapping parts easily
- 02. Set a default value in a part's address
- 03. Use function keys as shortcuts to reduce project development time
- 04. Automatically address switches during duplication
- 05. Share alarm messages in multiple controllers

■ For Screen Creators

Techniques for Reducing Screen Creation Time **Part II**



SECTION

01

Select overlapping parts easily

Solution Rating

★★★★★ 100%

Q

QUESTION ≪≪

For overlapping parts: Do I have to move the front part to edit the hidden part?

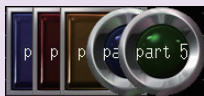
A

Pro-face's solution ≪≪

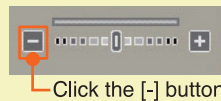
Using 'Display Navigator' enables you to display the part or drawing hiding behind another part.

Pro-face offers DISPLAY NAVIGATOR

For example,



in order to edit [Part 4], you have to move [Part 5].



Click the [-] button

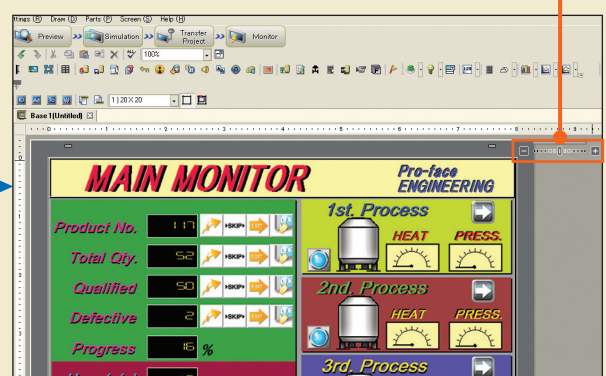
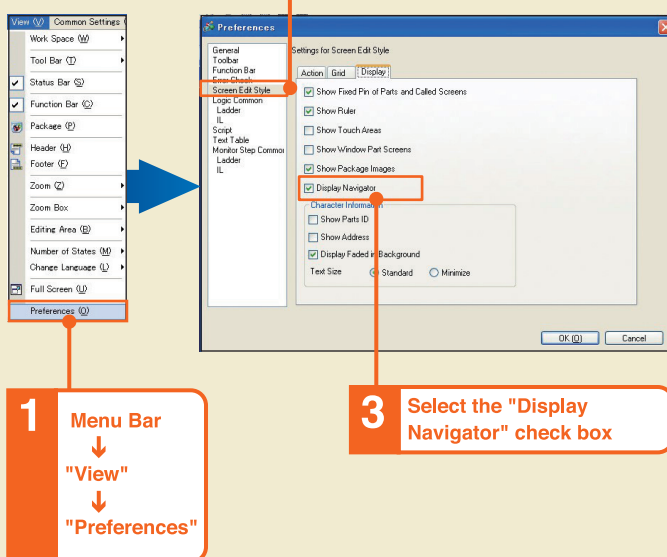


[Part 4] will appear on top.
(Every time the [-] button is clicked, the top part disappears. Clicking the [+] button causes the parts to appear in order again.)

Easy operation

Supported by GP-Pro EX Ver.2.2 or later

Display Navigator



The 'Display Navigator' function is a default for Ver.2.5 or later. It's not necessary to set it in advance

SECTION

02

Set a default value in a part's address.

Solution Rating



90%

Q

QUESTION ≪≪

Lots of parts have the same address, but do I have to set the address every time?

A

Pro-face's solution ≪≪

If a part's default value is set, an address will be set the next time the part is used. This reduces the work required for changes and improves efficiency.

Pro-face offers REGISTRATION OF THE ADDRESS DEFAULT

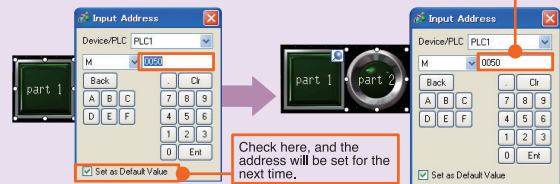
Factory Default

Set Address



If a default value is set,

The setup address(0050) is displayed.



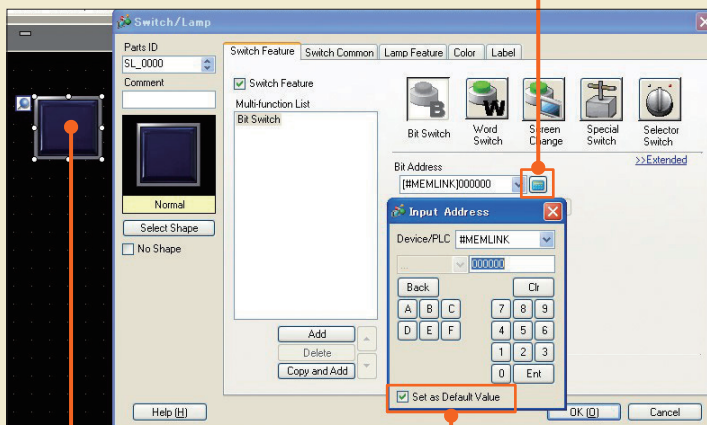
Easy operation

Supported by GP-Pro EX Ver.2.2 or later

Registration of the address default

Two methods to register the default value

Registration Method 1

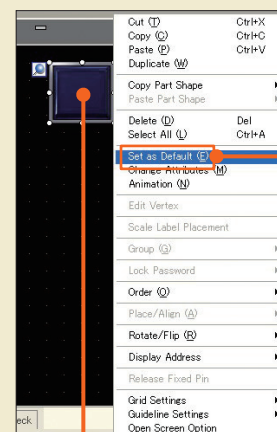


1 Place a part and double-click on it

3 Set an address and check "Set as Default Value"

2 Click the address settings

Registration Method 2



1 Right-click on the part with the address already set

2 Select "Set as Default"

SECTION

03

Use function keys as shortcuts to reduce project development time

Solution Rating



90%

Q

QUESTION ««

Selecting menus with the mouse can be time consuming.

A

Pro-face's solution ««

Use the Shortcut Keys. Reduce screen clutter and project development time. Mouse-less editing can also help when debugging projects at the production site.

Pro-face offers **SHORTCUT KEYS**

The 3 most popular keys:

- | | | |
|---|------------------|-------------------|
| 1 | F2 | Edit Text |
| 2 | F12 | Simulation |
| 3 | SHIFT+F12 | Transfer |

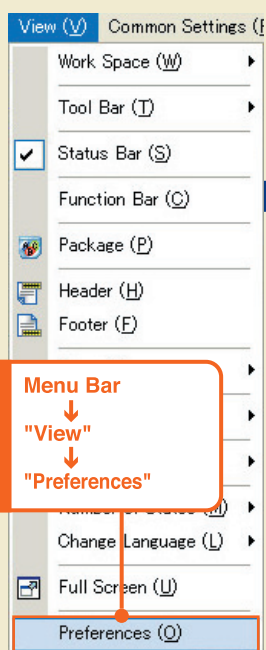
Most frequently used

Ctrl + Dragging **Copying a part**

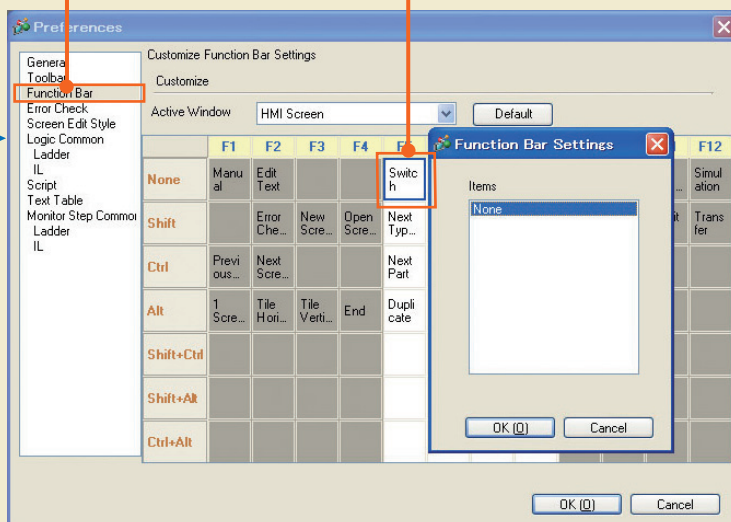
Easy operation

Supported by GP-Pro EX Ver.2.1 or later

Shortcut Key



2 Select "Function Bar"



Major Function Keys

F2: Edit Text F5: Go to Next Type of Part F9: Change Attributes F11: Full Screen F12: Simulation
Ctrl + F5: Switch Ctrl + F7: Data Display Shift + F3: New Screen Shift + F12: Run Transfer Tool

Create your own custom function keys to save time

SECTION

04 Automatically address switches during duplication

Solution Rating

★★★★★ 100%

Q

QUESTION ≪≪

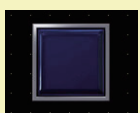
When duplicating a part, can I automatically assign the duplicated part an address?

A

Pro-face's solution ≪≪

When duplicating parts, you can enable "Automatically Increment Address" for each to reduce the work required for addressing parts.

Pro-face offers INDIVIDUALLY INCREMENT ADDRESSES



You can easily increment or fix more than one address in each switch when duplicating switches.

Example:

- * Add 1 bit to each switch address
- * Have the interlock address fixed
- * Add 2 bits to each lamp address

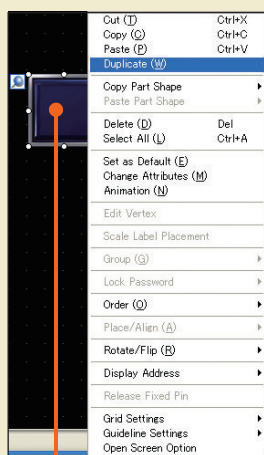
Switch address	X100	X101	X102	X103	◀ Add 1
Interlock address	X200	X200	X200	X200	◀ Fixed
Lamp address	Y020	Y022	Y024	Y026	◀ Add 2

You don't need to configure address settings for multiple functions separately.
You can configure them all at once.

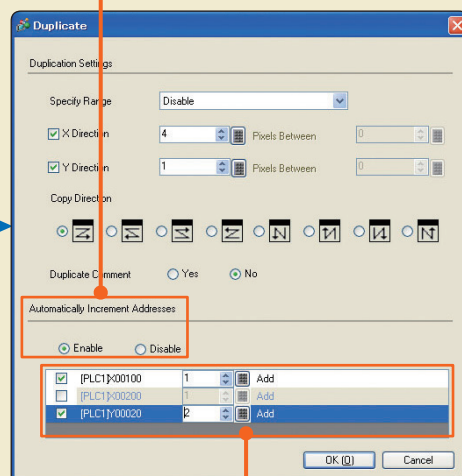
Easy operation

Automatically Increment Addresses

Supported by GP-Pro EX Ver.2.2 or later



1 Right-click on a part with either a Switch Address, Interlock Address, or Lamp Address. Then select "Duplicate".



2 Check "Enable" to "Automatically Increment Address"

3 Set the "Increment" value for each address

SECTION

05 Share alarm messages in multiple controllers

Solution Rating



80%

Q

QUESTION ««

Do I have to register same alarm messages to each controller ?

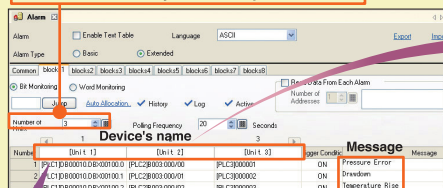
A

Pro-face's solution ««

You can register one alarm message to multiple controller addresses to reduce project development time.

Pro-face offers ALARM MESSAGE SHARING

Each block allows you to set up to 256 units.



You can register more than one device's addresses to one alarm message.

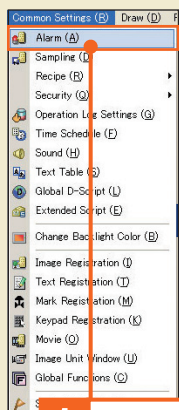
Device's name	Message
09/01/27 15:37 Unit 1	Drawdown
09/01/27 15:37 Unit 2	Drawdown
09/01/27 15:37 Unit 3	Drawdown
09/01/27 15:37 Unit 1	Temperature Rise
09/01/27 15:37 Unit 2	Temperature Rise
09/01/27 15:37 Unit 3	Temperature Rise
09/01/27 15:37 Unit 1	Pressure Error
09/01/27 15:37 Unit 2	Pressure Error
09/01/27 15:37 Unit 3	Pressure Error

The device's name is displayed with the message.

Easy operation

Supported by GP-Pro EX Ver.2.5 or later

Registering Alarm Messages



1 Menu Bar
↓
"Common Settings"
↓
"Alarm"

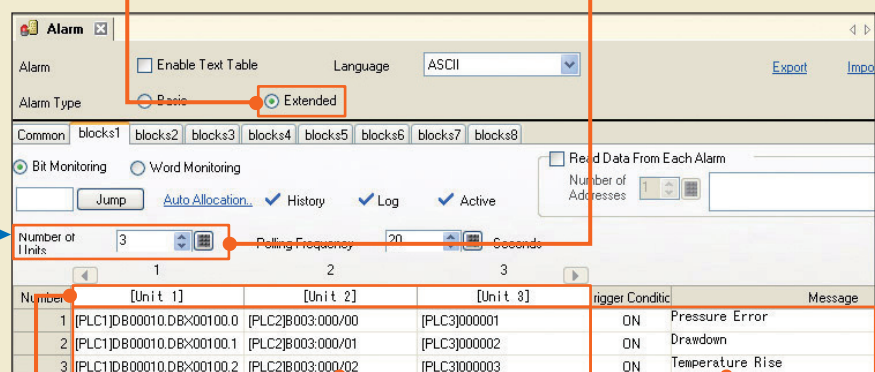
2 Select "Extended"

3 Set the number of controllers.
By setting more than one unit, you can register one alarm message to multiple device addresses.

4 Enter unit names*

5 Set addresses*

6 Set trigger conditions and alarm message descriptions*



*For example, if you set

Unit name: Unit 2 + Address: [PLC2]B003:000/01 + Trigger Condition: ON + Message: Drawdown

when the bit of address [PLC2]B003:000/01 is on, an alarm message of "[unit 2]Drawdown" will appear with the unit number on GP unit.

This function supports only the GP3000 unit with an Function Expanson Memory installed